

Model: PRIPORT UC5/UC5e/UC6		Date: 20-Feb-02	No: R-C930-001
Subject: PinkGold connectivity with UC5/UC5e		Prepared by: M. Ohtsubo, Priport Service Planning Section	
Classification:	<input type="checkbox"/> Troubleshooting	<input type="checkbox"/> Part information	<input type="checkbox"/> Action required
	<input type="checkbox"/> Mechanical	<input type="checkbox"/> Electrical	<input checked="" type="checkbox"/> Service manual revision
	<input type="checkbox"/> Paper path	<input type="checkbox"/> Transmit/receive	<input type="checkbox"/> Retrofit information
	<input type="checkbox"/> Other ()		
Model Name: UC5, UC5e, UC6			

Please note the following regarding the use of the UC5 and UC5e Printer Controllers with the PinkGold (#C238 model).

Firmware - UC5 and UC5e

The current firmware can be used with the PinkGold (refer to RTB #RC930-002).

Printer Driver - UC5 and UC5e

UC5/UC5e Controllers produced before January 2002 do not have the A3/300dpi printer driver, which is necessary for the PinkGold. You can download it from the SMA website: (<http://www.ziprip.com>). From January '02 Controller production, this printer driver is included with the CD-ROM (refer to RTB #RC930-002)

Installation in the PinkGold – UC5e Only

To install the UC5e in the PinkGold, the following 4 additional parts are necessary. As mentioned in MB #MC930-001, the Securing Screws were added from Jan '02 UC5e production, and the other 3 parts were added from Aug '02 production.

Old #	New #	Description	Qty	Int	Index
VU5E05406	VU5E05408	Mounting Plate (C235/C237/C238)	1	X/O	1
(VU5E05405)		Stand Off M4 x 45 mm (C238)	2 -> 3		2
	VU5E05399	26-Pin MPU Cable (C238)	1		3
	VU5E05411	Securing Screws Mounting Plate M4 x 6 mm	3		4

Model: PRIPORT UC5/UC5e/UC6	Date: 20-Feb-02	No: R-C930-001
------------------------------------	------------------------	-----------------------

Installation Procedure – UC5e in the PinkGold

Before beginning:

- 1) Have the following additional items available:
 1. Controller and mainframe service manuals
 2. User's guide
 3. A container to hold screws and other removed components
 4. Tool kit

- 2) Be sure to use Video Interface Kit Type-10.

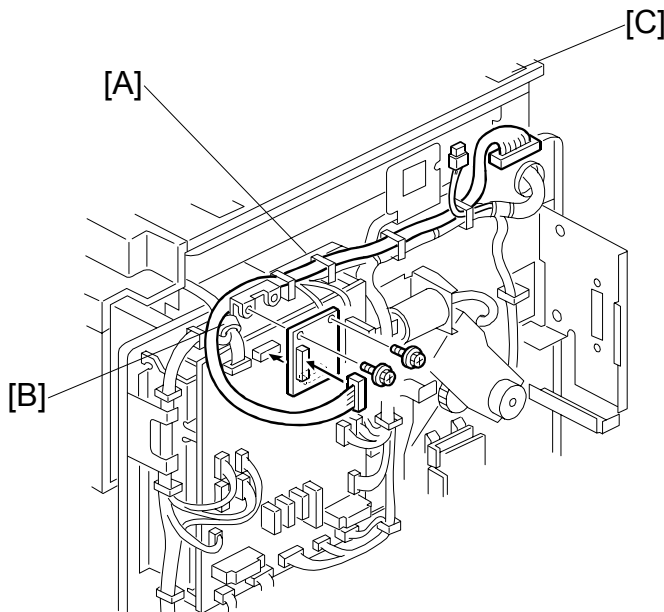
Video I/F Kit Type-10 Parts List

NO.	DESCRIPTION	QTY.
32	Interface Board	1
33	Relay Harness	1
34	Stepped Screw – M2 x 6	2
	Tapping Screw – M3 x 6	2

Note: Item number 33 is not used for the UC5e installation.

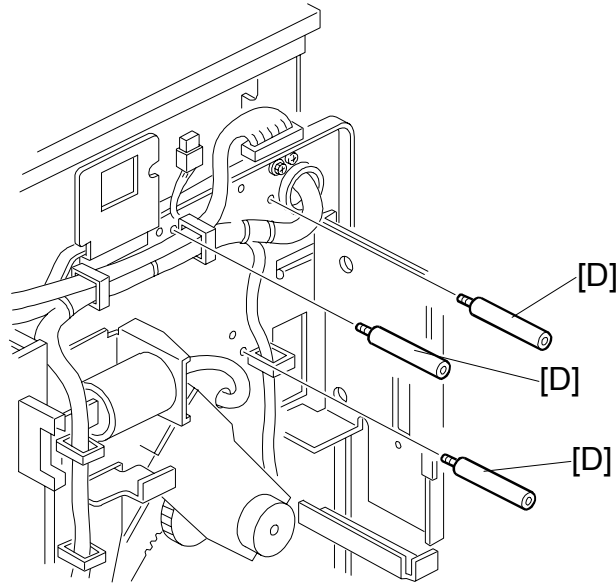
Performing the Installation:

1. Turn off the main switch and unplug the power cord.
2. Remove the UC5e and accessories from the box.
3. Remove the Rear Cover of the Digital Duplicator.
4. Install the Interface Board [A] (2 screws).
5. Locate cable [B] and connect the 26-pin straight end as shown.
Note: The twisted end [C] will be connected to the Main Board later in Step 13.



Model: PRIPORT UC5/UC5e/UC6	Date: 20-Feb-02	No: R-C930-001
------------------------------------	------------------------	-----------------------

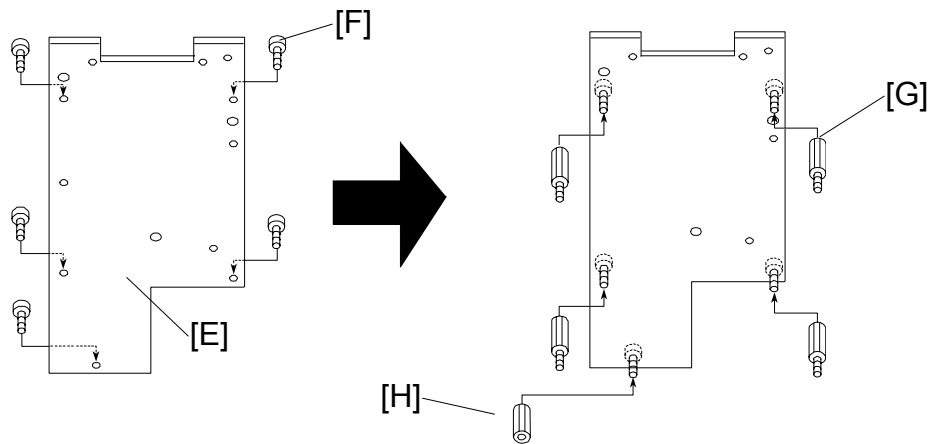
6. Mount the three 45mm standoffs [D] into the holes.



1002.WMF

NOTE: Tighten these standoffs with a flat screwdriver.

7. Locate the Mounting Plate [E] and orientate it correctly, as shown below.
8. Insert five M3x6mm screws [F] through the small holes in the plate shown below, tightening them all the way. Attach M3x10mm male-to-female standoffs [G] to the four top screws, then one M3x10mm standoff [H] to the bottom screw.

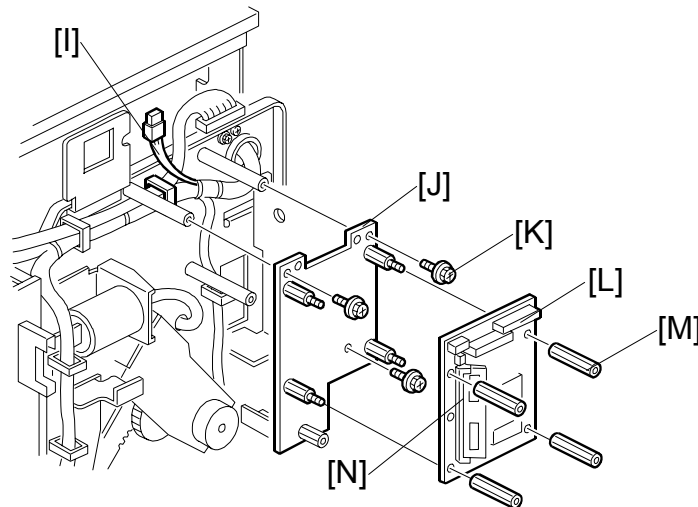


1006.WMF

NOTE: There are a total of six small holes in the Mounting Plate. In this step, only five of them are used (all other holes should be left as is).

Model: PRIPORT UC5/UC5e/UC6**Date:** 20-Feb-02**No:** R-C930-001

9. Disconnect the power cable [I].
10. Place the assembled Mounting Plate [J] onto the standoffs on the chassis and secure it in place using the three M4 screws [K].
11. Install the UC5e Main Board [L].
12. Attach four M3x25mm female-to-female standoffs [M].



1003.WMF

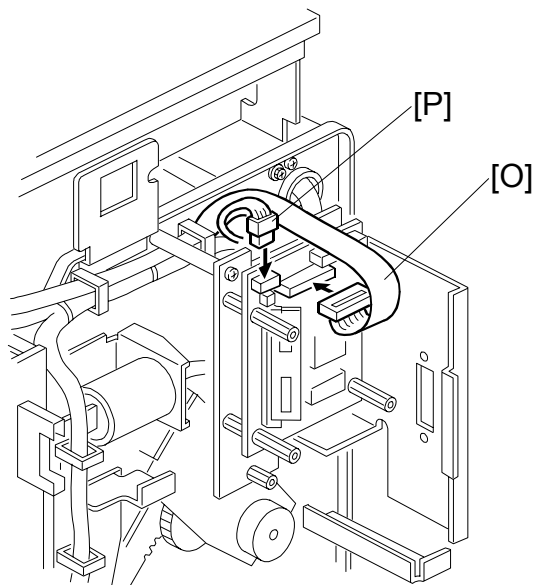
NOTE: The RAM SIMM [N] should be on the left.

Model: PRIPORT UC5/UC5e/UC6

Date: 20-Feb-02

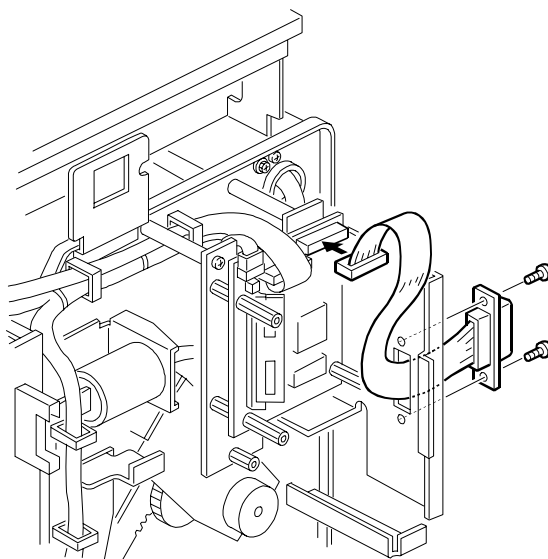
No: R-C930-001

13. Connect the cable [O] to the Main Board.
14. Connect the power cable [P] to the Main Board.



1004.WMF

15. Connect the 26-pin ribbon cable end to the outer connector on the Main Board. Attach the DB25 end to the DB25 cutout on the mainframe chassis using the two M3x5mm screws.

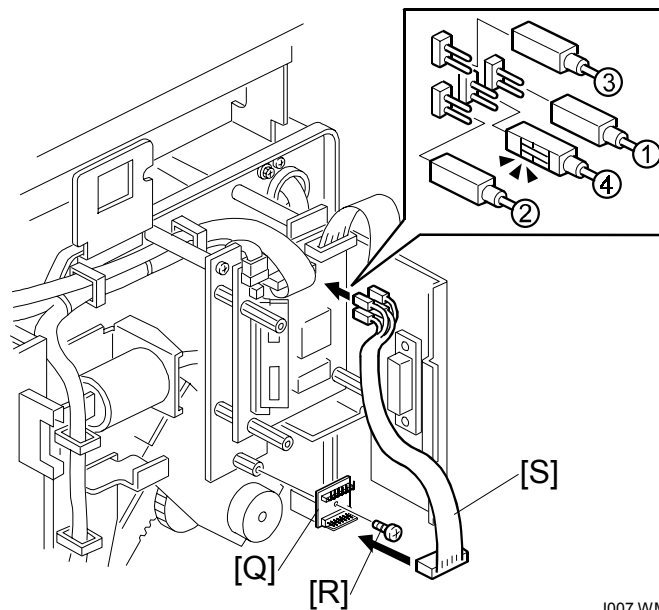


1005.WMF

Model: PRIPORT UC5/UC5e/UC6**Date:** 20-Feb-02**No:** R-C930-001

16. Mount the Keypad PCB [Q] onto the standoff on the bottom and secure it with the M3x6mm screw [R] supplied.
17. Locate the 8-pin ribbon cable [S]. Connect the white pin connector to the Keypad PCB [Q] and the 4x2-pin connectors to the main board.

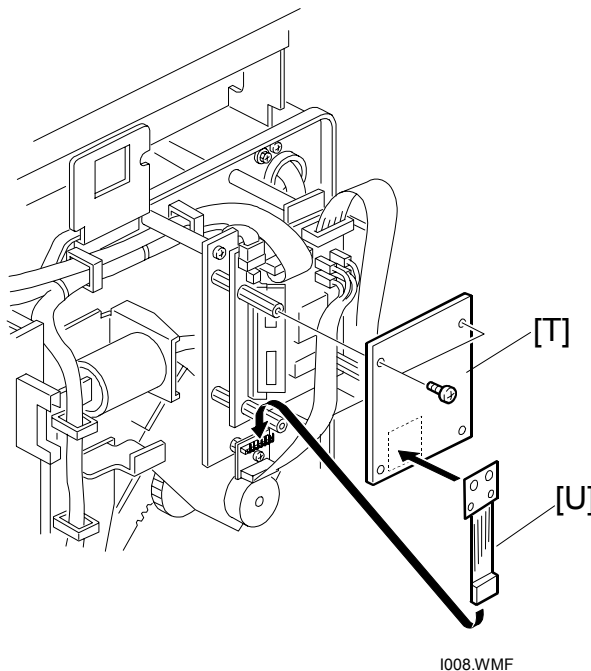
NOTE: Connectors 1 and 4 are polarity-sensitive. These connectors should be plugged in with the viewable pin side (2 gold pins) facing outwards and the solid sides facing each other.



I007.WMF

Model: PRIPORT UC5/UC5e/UC6**Date:** 20-Feb-02**No:** R-C930-001

18. Attach the UC5e Front Cover [T], then attach the Marguard LED and Button Assembly [U] onto the outside bottom of the Front Cover as shown.
19. Reattach the Rear Cover of the Digital Duplicator.



Model: PRIPORT UC5/UC5e/UC6		Date: 20-Feb-02	No: R-C930-002
Subject: UC5/UC5e firmware and printer driver modification history		Prepared by: M. Ohtsubo, Priport Service Planning Section	
Classification:	<input type="checkbox"/> Troubleshooting	<input checked="" type="checkbox"/> Part information	<input type="checkbox"/> Action required
	<input type="checkbox"/> Mechanical	<input type="checkbox"/> Electrical	<input type="checkbox"/> Service manual revision
	<input type="checkbox"/> Paper path	<input type="checkbox"/> Transmit/receive	<input type="checkbox"/> Retrofit information
	<input type="checkbox"/> Other ()		
Model Name: UC5, UC5e, UC6			

NOTE: This information is related to the UC5 and UC5e.

This bulletin is to inform you of the firmware and printer driver modification history of the UC5 and UC5e.

Firmware Modification History

Revision No.	Descriptions:	Month Affected
UC5: 5.0 UC5e: 5.1	First mass-production lot.	First mass-production
UC5: 6.0 UC5e: 6.1	<ul style="list-style-type: none"> • Improved support for duplicator error conditions and recovery. • Faster boot time. • Full support for Custom Page sizes (requires printer driver Rev 2.0) • Improved positioning accuracy for Custom Page Sizes. • Full support for additional paper trays and cassettes. • Automatic tray selection by paper size specified by the user in the driver (requires printer driver Rev 2.0). • Specific tray selection, via selection in the driver (requires printer driver Rev 2.0). • Paper size misdetection. • Automatic Rotation of A4, B5 and letter by 90° to match tray or cassette orientation. 	From January 2002 mass-production

Model: PRIPORT UC5/UC5e/UC6	Date: 20-Feb-02	No: R-C930-002
------------------------------------	------------------------	-----------------------

Printer Driver Modification History (UC5 and UC5e)

Revision No.	Description	Month Affected
1.0	First mass-production lot.	First mass-production
2.0	<ul style="list-style-type: none"> • Supported paper sizes changed: Folio→Statement, A4Tran→F (8x13). • Custom Page Size fully supported. • Multi-page image shift resolved (Windows NT 4.0) • Internet Explorer blank pages resolved. • Port Retry and Transmission times adjusted to prevent time out message during printing (Windows 9x). • Speed Dialogue removed. • Test Page Dialogue at installation removed (Windows 9x) • Translations updated. • PinkGold (#C238 model) added. (ZipRIP Pro E). See note 1. 	From January 2002 mass-production

- NOTE:**
- 1) PinkGold (#C238 model) connectivity is available by upgrading the printer driver to ver 2.0 or later.
 - 2) For UC5e machines produced before July 2001, PinkGold (#C238 model) connectivity is available by replacing some parts and by upgrading the printer driver to revision 2.0 or later (see MB #MC930-001).

Model: PRIPORT UC5/UC5e/UC6**Date:** 20-Feb-02**No:** R-C930-002

Firmware Update Procedure

**CAUTION**

UC5e firmware is NOT compatible with the UC5. The latest firmware and printer driver can be downloaded from the following URL: <http://www.ziprip.com>.

NOTE: Updating to ver 6.0 is performed in 2 stages:

1. The update file for Stage 1 is common to both the UC5 and UC5e (filename: "1OF2_V6a.Fla"). After installing this file and rebooting the machine, the activity LED will indicate successful installation by two long flashes, followed by 5 short flashes, ending in one long flash.
2. The update for Stage 2 should only be performed after Stage 1 has been successfully completed:
 - For the UC5: "UC5SV6-0 fla "
 - For the UC5e: "UC5EV6-0.fla "

In addition, please read the recommendations on the following page before beginning the update.

Update Procedure:

1. Switch OFF the Digital Duplicator and unplug the power cord from the outlet.
2. Locate the jumper next to the EEP-ROM chip.
3. Set the jumper to the ON position.
4. Power up the duplicator.
5. Boot up the PC and go into DOS mode.
6. Use the COPY command to begin the flash update.
(e.g. "copy filename.fla Lpt1:", where Lpt1 is the connected port).
7. While the flash update is in progress, the LEFT LED is continuously ON.
8. Wait for the LEFT LED to flash rapidly, indicating that the updated has been completed.
9. Switch OFF the UC5e and set the jumper back to the OFF position.

Model: PRIPORT UC5/UC5e/UC6**Date:** 20-Feb-02**No:** R-C930-002

The following are recommended to ensure a problem-free flash update of the firmware:

1. Before starting, ensure that the UC5 or UC5e is printing correctly from the PC that will be used to perform the update.
2. Use a PC with Windows 98 or ME with the LPT port in ECP mode.
3. Laptops are NOT recommended.
4. Check that "Spool MS DOS Jobs "is enabled in the ZipRIP driver connected to the UC5 or UC5e being updated.
5. Ensure that during the update, no application or device will interfere or use the LPT port connected to the UC5 or UC5e.
6. Reboot the PC prior to the update and ensure that it is not running any unnecessary applications.
7. When handling the UC5 or UC5e flash jumper, ensure that you have taken all antistatic precautions outlined in the Service Manual.

Model: PRIPORT UC5/UC5e/UC6		Date: 27-Dec-02	No: R-C930-003
Subject: UC6 product update		Prepared by: M. Ohtsubo, Priport Service Planning Section	
Classification:	<input type="checkbox"/> Troubleshooting	<input type="checkbox"/> Part information	<input type="checkbox"/> Action required
	<input type="checkbox"/> Mechanical	<input type="checkbox"/> Electrical	<input type="checkbox"/> Service manual revision
	<input type="checkbox"/> Paper path	<input type="checkbox"/> Transmit/receive	<input type="checkbox"/> Retrofit information
	<input checked="" type="checkbox"/> Other (product update)		
Model Name: UC5, UC5e, UC6			

The UC6 product has been updated and the model name has been changed to UC6 Gold from UC6. The details are below.

Details of modification

1. Hardware
 - 1) CPU: 500 MHz → 850 MHz
 - 2) RAM: 64 MB → 128 MB
 - 3) HDD: 2 GB → 30GB
 - 4) Floppy drive removed.
 - 5) Cream and blue case changed to black and gold.
2. Software
 - 1) RIP: PostScript Level 2 → PostScript Level 3
 - 2) PS print jobs can be downloaded to UC6.
 - 3) Integrated the admin page with:
 1. Version control system
 2. Firmware
 3. Software
 4. Drivers
 5. Documentation
 6. Interpreter updates
 7. System components
 - 4) Separations can be selected from the driver.
 - 5) Supports Mac OS X and Windows XP.
 - 6) Supports TCP/IP printing via LPR.
 - 7) Administrative features via a web browser are included to provide:
 1. Static or DHCP configuration of the network
 2. WINSERVERS support
 3. DNS servers support
 4. Job log
 5. Spooler
 6. Active jobs copy quantity and master quantity
 7. Active jobs cancelled or paused
 8. System status page

NOTE: 1) Commencing from serial number F072891002.